



INVERAY[®]
NATURAL BEAUTY

 **inverayofficial**

 **inveray.official**

 **inveray**

 **inveray**

 **inveray**

 **office@inveray.com**

 **0048 883 661 881**

 **www.inveray.com**



scan me

INVERAY[®]

Skin is a woman and that is why only the strong, independent women responsible for our formulas could have created a line of luxury cosmetics suitable for every one of us.

Each of us is different, but we all want to feel unique at least for a moment.

Thanks to INVERAY products, this moment could last **forever**.

*I strive for the ideal of beauty, elegance and high quality.
I connect the world of nature with the world of modern technologies.
The INVERAY brand was established at the junction of these two worlds.*

Joanna Kimla - founder of INVERAY

Joanna Kimla



Inveray
UV/LED gel polishes feature an innovative formula that, thanks to their high pigmentation, ensures maximum coverage with just one coat.



INVERAY

Inveray is a prestigious manicure brand synonymous with luxury and quality. With a foundation rooted in 2021, Inveray has swiftly established a global presence in over 20 countries. Renowned for pioneering allergen-free formulas, Inveray offers a unique fusion of safety, opulence, and innovation. As trendsetters, we redefine beauty standards, captivating enthusiasts worldwide.



Every Inveray product is vegan.



Inveray products are not tested on animals.



Inveray products do not contain 13 commonly used allergenic and irritating substances, such as HEMA, di-HEMA, and formaldehyde.



Our products are non-toxic, have gentle formulations, and are environmentally friendly, suitable for both humans and the environment.



The durability of a manicure properly done with Inveray gel polishes exceeds 21 days.



The products are free from strong chemical odors.



The products are self-leveling, which beautifully smooth out any unevenness on the nail surface.



Our UV/LED gel polishes, base coats, top coats, and gels are meticulously formulated to ensure the highest quality. Importantly, they are free from hazardous substances often found in other products. We believe that beauty shouldn't come at the expense of health, and we've ensured that our products reflect this philosophy.

HEMA - a colorless, sticky liquid that easily polymerizes, hardening upon exposure. When it encounters the eyes, it can cause irritation, inflammation, skin irritation, and allergic reactions. Prolonged exposure can lead to severe skin inflammation, nail plate damage, nail diseases, or cell mutations.

di-HEMA Trimethylhexyl Dicarbamate - a chemical substance that, when combined with UV radiation, forms a solid, uniform coating. Unhardened molecules can penetrate the skin, causing irritation and potentially leading to allergies over time.

Triphenyl phosphate - a chemical used in plastics to improve flexibility and reduce flammability. It acts as an endocrine disruptor, potentially harmful to reproductive health and lipid metabolism.

Formaldehyde resin - a formaldehyde derivative used in coatings and adhesives. Less toxic than formaldehyde itself but can still be an allergen.

Formaldehyde - its vapors irritate human mucous membranes and can cause asthma. It's also a known carcinogen directly associated with cancer.

Camphor - a toxin that can cause seizures and disorientation when used in large quantities. Contact with the nail plate can deprive it of nutrients and lead to yellow spots.

Toluene - a solvent with a strong odor that irritates the skin. Inhaling toluene is harmful to the nervous system and can lead to dizziness and nausea. It's a toxin, and its prolonged exposure during pregnancy can result in birth defects and developmental issues in children.

Xylene - irritating to the skin, eyes, and respiratory tract when swallowed or inhaled. Symptoms of xylene poisoning include central nervous system damage (headaches, dizziness, ataxia, drowsiness, excitement, tremors, coma), arrhythmias, acute pulmonary edema, respiratory depression, nausea, and vomiting.

DBP - a commonly used plasticizer that may cause cancer. It is listed as a teratogen on the California Proposition 65 list and likely causes embryo development defects."

TPO - is a photoinitiator used in gel nail polishes and gels to cure under UV light. It is considered harmful as it may cause skin sensitization, environmental toxicity, and potentially affect fertility.



WE FOCUS ON NATURAL INGREDIENTS AND HIGH-QUALITY MATERIALS

Marine bamboo

We base our cosmetics on the marine bamboo extract - the active substance that won The Green Ingredient Award in 2018. Marine bamboo is a plant that grows in the depths of the Atlantic Ocean and the North Sea. It has developed the ability to protect itself from highly harmful blue light (which penetrates the skin deeper than UV rays and accelerates photoaging). The marine bamboo extract we use in our products has a beneficial influence on skin that is exposed to sunlight and blue light (which is emitted by devices such as smartphones, computers, TV sets or LED lighting). It stops the most harmful radiation from reaching our skin, preventing damage to collagen and elastin fibres, which have an impact on the look of our skin. What is more, marine bamboo has antiageing properties, it smoothes and tones the skin and stimulates the production of collagen.

Omegalight®

Innovative and patented ingredient. It is an ester that was created by combining piperonyl alcohol with linoleic acid that comes from the safflower seeds. It lightens pigmentation spots already visible on the skin as well as spots hidden in the deeper layers. It has an antiinflammatory effect by regulating the release of inflammatory mediators - PGE2 and TNF-α.

Squalane

One of the key ingredients of our products is squalane - dry oil made from sugar cane. It has moisturising, firming, oiling and anti-wrinkle properties. It lightens the skin, improves its elasticity and protects it from free radicals. It is a versatile ingredient, and that is why it is also used in hair care products. Squalane increases hair moisture, improves hair elasticity and makes your hair more resistant to mechanical and thermal damage.

Lipo Vitamin C (Ascorbyl Tetraisopalmitate)

Highly effective liquid version of Vitamin C that improves skin glow by reducing the production of melanin. It also lightens pigmentation spots and protects from premature ageing.



HAND CARE
Intensive Rebuilding Serum

Intensive Rebuilding Serum designed especially for the delicate skin of the hands, which is exposed to premature ageing through discolouration resulting from hormonal changes, the harmful effects of UV radiation, or a loss of firmness and smoothness. The innovative combination of antioxidant and lipophilic vitamins A, E and C with marine bamboo extract forming a protective shield against blue radiation helps to brighten and lighten discolouration and to restore a youthful appearance to the skin. Liquid shea butter, squalane and safflower oil wrap the hands tenderly, making them soft, properly nourished and regenerated.

- Immediate effects:** hydration, intense smoothing, shine, firmness.
- Additional effects:** protection against harmful blue light and against new discolouration.
- Long-term effects:** lightens and helps to gradually remove skindiscoloration, stimulates collagen synthesis in skin cells, smoothes and reduces the visibility of wrinkles and fine lines, slows down and reverses the ageing process of the skin of the hands, protects the lipid structure of the epidermis against oxidative stress, significantly improves the condition and appearance of skin, accelerates skin renewal improves the condition of the nail plate, regenerates the nail plate.

AVAILABLE CAPACITY: 30 ml

ACTIVE INGREDIENTS: squalane, shea butter, cottonseed oil, vitamin C, vitamin E, vitamin A, camellia oil, marine bamboo, tsubaki oil, green tea extract, gardenia extract, chamomile extract, coconut oil, sunflower oil, grape seed oil

NATURALLY SCENTED WITHOUT ALLERGENS
the sophisticated fragrance composition contains notes of pomegranate, orchid, lotus flower, musk and mahogany





HAND CARE Luxury Elixirs

NEW PHILOSOPHY OF CARE MANICURE

Revolutionary Inveray elixirs are being designed to completely change current philosophy of making manicure. This product is formulated as ultra-fast treatment increasing nail plate strength, nutrition and hydration level.

After manicure process, apply one drop of elixir on the cuticles, massage in it and apply one drop under each nail plate to strengthen it. Active complex of squalan and oils helps natural nails to regenerate and support their growth.

You can use it also every time when remove manicure. Just apply a drop under natural nail plate after removing gels/acrylics/gel polishes and massage for few seconds. Wait about 2 minutes and you will immediately see incredible difference delivered by our amazing composition of active ingredients.

That small change in nail stylization routine would become now huge leap for nail world.

98% natural





HAND CARE Luxury Repair Elixir

HANDS & NAILS THERAPY CUTICULE OIL
Marine Bamboo Extract, Chia & Cotton Oil, Wild Rose Oil

Luxury Repair Elixir has an extremely effective 98% natural formula developed especially for healthy, strong and shiny nails and to reduce the roughness and dryness of cuticles. Rose hip oil, chia oil, cotton seed oil and sea bamboo extract intensively regenerate and strengthen the nail plate, protecting it against harmful environmental factors. Pomegranate oil nourishes, softens and smoothes cuticles, making hands sensuous and beautiful.

Immediate effects: hydration, skin softness, smoothness, shine

Long-term effects: protects against harmful blue light, revitalizes, stimulates collagen synthesis and affects its increase, visibly tones the skin - restores the youthful, firmness to the skin, significantly improves the skin tightness, stimulates the biosynthesis of ceramides and increases their level in the epidermis, smoothes fine wrinkles and lines, improves the condition of the nail plate, regenerates the nail plate.

AVAILABLE CAPACITY: 10 ml

ACTIVE INGREDIENTS: squalane, liquid shea butter, cottonseed oil, rosehip, red raspberry seed oil, pomegranate seed oil, chia seed oil, sea buckthorn fruit oil, marine bamboo, vitamin E

THE SOPHISTICATED FRAGRANCE COMPOSITION contains notes of tuberose, jasmine and cocoa

98% natural





HAND CARE Luxury Moisturising Elixir

HANDS & NAILS THERAPY CUTICULE OIL
Marine Bamboo Extract, Watermelon Oil, Jojoba Oil

Luxury Moisturizing Elixir has an extremely effective 98% natural formula developed especially for healthy, strong and shiny nails and to reduce the roughness and dryness of cuticles. Jojoba oil, watermelon seed oil and sea bamboo extract strengthen and regenerate the nail plate, protecting it against harmful environmental factors. Liquid shea butter helps to moisturize, softens and smoothes cuticles, making hands sensuous and beautiful.

Immediate effects: deep hydration, shine, improved firmness, relief for cracked skin, relief for irritation, skin softness.

Long-term effects: supports collagen production and affects its increase, replenishes moisture deficits in the skin, slows down the skin ageing process thanks to the very high content of antioxidants, affects the reduction and elimination of epidermal keratinisation, strengthens the protective barrier of the epidermis, helps to strengthen the hydrolipid barrier of the epidermis, protects against adverse weather conditions, visibly rejuvenates the skin, protects against harmful blue lightradiation, improves the condition of the nail plate, regenerates the nail plate.

AVAILABLE CAPACITY: 10 ml

ACTIVE INGREDIENTS: squalane, liquid shea butter, jojoba oil, cottonseed oil, marine bamboo, watermelon seed oil, vitamin E

THE SOPHISTICATED FRAGRANCE COMPOSITION contains notes of jasmine, bergamot and rose, softened with the scent of cedar, vanilla and musk

98% natural





HAND CARE Luxury Nourishing Elixir

HANDS & NAILS THERAPY CUTICULE OIL
Marine Bamboo Extract, Argan & Castor Oil, Tsubaki Oil

Luxury Nourishing Elixir has an extremely effective 98% natural formula developed especially for healthy, strong and shiny nails and to reduce the roughness and dryness of cuticles. Argan oil, castor oil, tsubaki oil and sea bamboo extract strengthen and regenerate the nail plate, protecting it against harmful environmental factors. Squalane softens, nourishes and smoothes cuticles, making hands sensuous and beautiful.

Immediate effects: nourishment, intense smoothing, shine, soothed irritation.

Long-term effects: eliminates the roughness of the skin, supports collagen production and affects its increase. Prevents the breakdown of elastic fibres and thickens the skin, strengthens the barrier properties of the epidermis, improves the condition of the nail plate, regenerates the nail plate, prevents water loss, slows down the ageing processes, significantly improves the condition of the skin and gives it a beautiful luminous appearance, visibly reduces surface wrinkles and fine lines, protects against harmful blue light, tones.

AVAILABLE CAPACITY: 10 ml

ACTIVE INGREDIENTS: squalane, liquid shea butter, cottonseed oil, argan oil, castor oil, marine bamboo, tsubaki oil, green tea extract, vitamin E

THE REFINED FRAGRANCE COMPOSITION contains notes of tangerine, peppercorn and orange, which are softened with a floral note, coffee and vanilla

98% natural





Nail & Cuticle Vitamin Booster Iside/Gaia

INVERAY Nail & Cuticle Vitamin Booster is a technologically advanced cosmetic for people who value luxury products with immediate noticeable effects, dream about beautiful and well-groomed cuticles and nail plate. Suitable for all skin types. Scent composition formulated without allergens. Free of paraffins.

Iside Vitamin Booster provides extreme moisture and nourishment without sticky residues and stimulates healthy nail growth.

Gaia Vitamin Booster strengthens nails and dry cuticles, provides extreme protection against cracking and stimulates healthy nail growth.

AVAILABLE CAPACITY: 10 ml

ACTIVE INGREDIENTS: squalane, orbignya oleifera (babassu) seed oil, argania spinosa kernel oil, helianthus annuus seed oil, protium heptaphyllum resin, ricinus communis (castor) seed oil, camellia japonica seed extract, camellia japonica seed oil, camellia sinensis seed oil, camellia japonica flower extract.

FREE OF: parabens, paraffinum, phenoxyethanol, formaldehyde.

Non-comedogenic & suitable for sensitive skin. Doesn't clog skin pores. Free of allergens.





The world's only SPA LINE with Inveray Beauty Fusion Complex

Discover the epitome of luxurious hand and foot care with the groundbreaking Inveray SPA collection - featuring the world's most sophisticated fusion of succinic acid, peptides, and marine bamboo and other active ingredients in one extraordinary complex. This exclusive formulation transforms daily skincare rituals into an opulent spa experience, delivering silky smoothness and radiance with every application. Perfect for both professional pedicure treatments and at-home indulgence, the Innovative Complex Inveray Beauty Fusion elevates skincare to new heights of refinement, ensuring unparalleled nourishment and rejuvenation throughout the year.



RITUAL HAND CREAM

with Inveray Beauty Fusion Complex

The Inveray Luxury Hand Cream embodies the harmony of aesthetics, nature, and innovation. With carefully selected ingredients, its formula comprehensively and effectively nourishes the skin of the hands, providing comfort and a natural glow. The inclusion of Gluconolactone (PHA acid) gently exfoliates and deeply hydrates, while the addition of Rainbow Algae Extract perfectly evens out skin tone. A cocktail of vitamins B3, C, E and provitamin B5 offers antioxidant effects, strengthens the skin barrier, and stimulates regeneration. Squalane and Cottonseed Oil replenish the lipid layer. Thanks to the innovative 'Inveray Beauty Fusion' complex, which combines Peptides, Ceramides, and Amber Extract, the skin becomes naturally silky and soft. The elegant scent of the cream envelops you in luxury, and the delicate gold particles add a subtle finesse, leaving your hands radiating elegance and femininity.

Active Ingredients: Peptides, Amber Extract, Vegan Ceramides, Gluconolactone, Vitamin C, Rainbow Algae Extract, Niacinamide (Vitamin B3), Panthenol (Provitamin B5), Vitamin E, Sea Bamboo Extract, Squalane, Cottonseed Oil, Shea Butter.

DERMATOLOGICALLY TESTED

According to research, Ritual Hand Cream perfectly meets all the needs of hand skin:

- moisturizes
- softens the skin
- nourishes
- regenerates
- brightens discolorations, evens skin tone, and adds radiance to hands
- softens the cuticles around the nails
- reduces fine lines on the hands
- smoothes the skin of the hands



RITUAL HAND SCRUB

with Inveray Beauty Fusion Complex

Experience the unique care and sensory delight with Inveray's luxurious hand scrub enriched with volcanic sand particles and golden accents. It works intensively to remove dead skin cells, leaving your skin silky smooth. The formula, containing carefully selected ingredients such as Gluconolactone, Panthenol, and Squalane, supports hydration and nourishment of the skin. The elegant scent of the scrub makes the treatment a truly luxurious ritual. Discover the secret to beautiful and well-cared-for hands with this meticulously crafted composition.

Active Ingredients: Volcanic Sand, Gluconolactone, Panthenol, Squalane, Sea Bamboo Extract, Amber Extract.

Way of use: Apply an appropriate amount to damp hands. Massage for 1-2 minutes, then rinse with lukewarm water. For best results, follow with the Ritual Hand Cream.



RITUAL FOOT CREAM

with Inveray Beauty Fusion Complex

Discover the essence of luxury care with Inveray's rich foot cream, crafted from a passion for excellence. The expertly formulated cream contains ingredients that work on multiple skin levels and various mechanisms, delivering an almost immediate effect of softness and comfort. The inclusion of Succinic Acid in foot care is a true innovation, offering similar benefits to salicylic acid—gentle exfoliation and inhibition of bacterial and fungal growth. A deep moisturizing effect is achieved through a blend of Gluconolactone, Niacinamide, Panthenol, Peptides, Marine Bamboo Extract, and Amber Extract. Almond Oil, Vitamin E, Shea Butter, Squalane, and Ceramides replenish the lipid barrier, ensuring skin elasticity, while Prebiotics support a healthy microbiome. The cream also helps to inhibit the growth of microorganisms responsible for unpleasant odors. Inveray Foot Cream is not just ordinary care—it's effectiveness, pleasure, and excellence in daily foot care.

Studies have shown the exceptional effectiveness of Inveray Ritual Foot Cream:

- intensively moisturizes the skin
- effectively softens and smooths the skin surface
- deeply nourishes and supports skin regeneration
- prevents cracking of the skin on the heels
- significantly softens the skin on heels and toes
- maintains the effect of hydration and nourishment for a long time
- after just 5 days of use, the skin of the feet becomes softer and more hydrated

Active Ingredients: Succinic Acid, Gluconolactone, Ceramides, Marine Bamboo Extract, Niacinamide, Peptides, Panthenol, Amber Extract, Prebiotics, Almond Oil, Vitamin E, Shea Butter, Squalane.
DERMATOLOGICALLY TESTED

Way of use: Apply a thin layer of cream to clean, dry feet. Massage until absorbed.



RITUAL FOOT SCRUB

with Inveray Beauty Fusion Complex

Discover the secret of natural foot care with Inveray's luxurious foot scrub. This product is unique, being the first to use succinic acid in foot care, with effects comparable to salicylic acid. A combination of Panthenol, Sea Bamboo Extract, Amber Extract, and Almond Oil supports hydration, while gentle grains of volcanic sand effectively remove dead skin cells, leaving your skin silky smooth. This exclusive scrub is more than just care—it's a luxury ritual that transports your feet to a world of relaxation and flawless beauty.

Active Ingredients: Volcanic Sand, Succinic Acid, Panthenol, Sea Bamboo Extract, Amber Extract, Glycerin, Almond Oil.

Way of use: Apply an appropriate amount to the feet, massage for 2 minutes, then rinse with lukewarm water. For best results, use the Ritual Foot Cream.



MANICURE UV/LED Gel Nail Polish

Saturated colour that does not lose its intensity for many days!
Long-lasting shine and resistance to external factors. INVERAY UV/LED nail polish represents the latest generation of light-cured gel polishes, providing full coverage with a single layer. The real colour of the nail polish is shown on the cap to let you easily and quickly pick the colour you need for the styling. This elegant and functional design of the packaging has been refined, above all, taking under consideration the comfort of working with the product. The ergonomic shape of the cap allows you to make whole application process more comfortable. Our brush has been designed for the INVERAY brand in such a way that its shape and structure facilitate application. One smooth move with brush allows you to cover whole nail plate with proper amount of product. INVERAY UV/LED nail polish is suitable for the gel, acrylic and acrylic gel methods and works perfectly with the natural nail plate.

Get the INVERAY Gel Nail Polish for: perfect coverage, excellent adhesion, flexibility
- nail polish expands and shrinks along with the nail plate, it is resistant to temperature change, it does not crack or break, even application without smudges, intensive shine and colours for 21 days or more, covering up small irregularities in nail plates, high resistance to scratches and chipping, optimal density, self-levelling properties, **innovative 13-free-of formula without: HEMA, di-HEMA Trimethylhexyl Dicarbamate, triphenyl phosphate, formaldehyde resin, ethyl tosylamide, formaldehyde, fragrance, parabens, camphor, toluene, xylene, DBP, TPO**

AVAILABLE CAPACITY: 10 ml



COLOUR PALETTE UV/LED Gel Nail Polish



COLOUR PALETTE UV/LED Gel Nail Polish



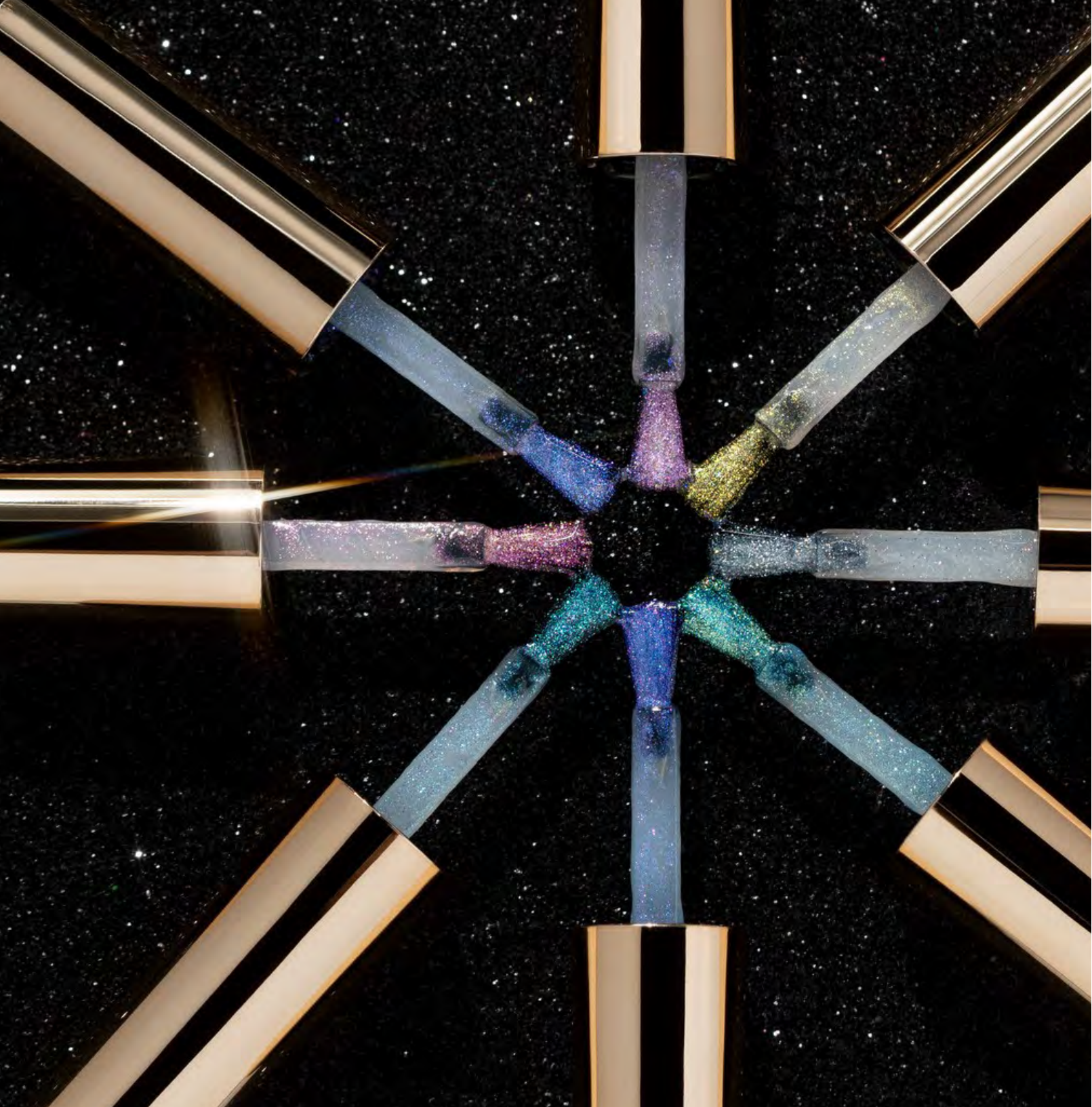


INVERAY®
NATURAL BEAUTY

✉ office@inveray.com

☎ 0048 883 661 881

🌐 www.inveray.com



MANICURE

INVERAY UV/LED FRØSTH represents the latest generation of light-cured gel polishes. Colour palette of UV/LED FRØSTH contains 8 different shades with opalescent particles. Having done a manicure, just apply the selected UV/LED FRØSTH on the previously matted top to get a completely new shiny manicure or when performing a full manicure, apply UV/LED FRØSTH on the cured gel nail polish to create a shiny version of your favourite colour of the gel nail polish.

Get the INVERAY UV/LED FRØSTH for: excellent adhesion, flexibility - nail polish expands and shrinks along with the nail plate, it is resistant to temperature change, it does not crack or break, even application without smudges, intensive shine and colours for 21 days or more, high resistance to scratches and chipping, optimal density, self-levelling properties, innovative 12-free-of formula without: HEMA, di-HEMA Trimethylhexyl Dicarbamate, triphenyl phosphate, formaldehyde resin, ethyl tosylamide, formaldehyde, fragrance, parabens, camphor, toluene, xylene, DBP.

AVAILABLE CAPACITY: 10 ml





INVERAY Macaron UV/LED Gel Polish product line is innovative use of glitter while being easy to work with. The collection includes 9 gel polishes of delicate colours (semi-transparent) with particles of different shapes and sizes. For the application of Macaron UV/LED gel polish line is required professional Inveray brush, which will allow the product to be easily applied from the jar to the nail plate. Innovative use of glitter while being easy to work with. The unique selection of particles, which enable them to be used in many designs. Huge product capacity - one 10 ml jar can be used to create a multitude of looks.

The carefully developed formula of the products allows for perfect application. The particles do not stick together, so they are easy to spread and allow proper positioning on the nail.

The product can be applied directly to a cured UV/LED Base or Builder Gel or to any shade of UV/LED gel polish for a unique design.

Macaron UV/LED Gel Polish also allows for creativity and combination with other colours from the UV/LED gel polish Luxury Collection.

Available capacity: 10 ml



BLUEBERRY No. 02



CANDY No. 08



FRUIT BAR No. 09



ALMOND BISQUIT No. 06



LADY FINGER No. 07



LEMON CURD No. 05



MINT CHOCOLATE No. 03



PISTACHIO No. 04



SUGAR No. 01



MANICURE UV/LED Base Coat Cement Gluing

INVERAY UV/LED Base Coat product line is our response to constantly growing demand for a professional HEMA-free product of the highest quality in a modern formula.

INVERAY UV/LED Base Coat is a light-curing gel polish of the latest generation. The carefully developed formula of the product allows for extremely easy application and shows maximum adhesion to the nail plate surface without damaging the nail structure.

How to apply:

Apply thin layer of UV/LED Base Coat Cement Gluing. To increase the durability of stylization, perform a rubbing motion. This short back and forth movement, starting from the free edge, moving towards the skins is much more efficient compared to a single move.

AVAILABLE CAPACITY: 10 ml



To increase durability of manicure apply before:





**Manicure
PolyShape Base Coat**

The world's only professional PolyShape Base Coat enriched with biotin, proteins and vitamin E specifically designed for the PolyShape system, enhances the durability of manicures using acrylic gel. The Base aims to provide excellent adhesion for subsequent layers while protecting the nail plate from pigmentation in acrylic gels, as well as preventing micro-damage or air entrapment in the styling. The 12-free-of formula eliminates commonly used allergens and irritants. PolyShape Base Coat is flexible, collaborates seamlessly with the nail plate, and, thanks to its appropriate consistency and self-leveling formula, does not run onto the cuticles.

How to apply:
Apply thin layer of PolyShape Base Coat. To increase the durability of stylization, perform a rubbing motion. This short back and forth movement, starting from the free edge, moving towards the skins is much more efficient compared to a single move.

AVAILABLE CAPACITY: 10 ml

To increase durability of manicure apply before:





MANICURE UV/LED Base Coat Rubber

The Rubber enriched with natural resins is like a dressing for the nail plate. The base is flexible, works with the natural nail plate, is resistant to deformation, and allows you to hide and eliminate any unevenness of the nail. Thanks to the **Rubber** hybrid base, a protective layer is created on the surface of the nail plate, which protects it against mechanical damage, splitting and breaking. The base can be used as a base for any gel polish or UV/LED Top can be applied directly to it, which in the case of **Pink or Cover Pink** allows you to obtain the effect of a quick, natural manicure. The **Pink, Cover Pink** and **Milky White** colors additionally hide discoloration and imperfections of the nail plate.

AVAILABLE CAPACITY: 10 ml





MANICURE UV/LED Base Coat Builder in a Bottle

It's hard UV/LED base for special tasks, available in 4 colors. You can apply it directly to the nail plate (as a base), and also as a builder and nail extension layer up to 7mm. The base is self-leveling and allows you to easily build up, align, model, strengthen and extend the nail plate. Creates a protective layer that protects against mechanical damage, splitting and breaking nails. Hardens and protects weakened, thin and brittle nails. It can be used as a base for any gel polish or UV/LED Top can be applied directly on it, which in the case of a pink or cover color allows you to obtain the effect of a quick, natural manicure. Thick consistency provides a strong and hard foundation that is easy to apply, and also spreads well under the brush. The Pink, Cover and Milky White colors hides discoloration and imperfections of the nail plate.

AVAILABLE CAPACITY: 10 ml

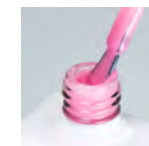




MANICURE NATURAL VIBES UV/LED Base Coat Biotin, Keratin, Vitamin E

UV/LED Base Coat Natural Vibes is enriched with vitamin E, keratin and biotin to keep nails nourished and cared for. The base is flexible, works perfectly with the natural nail plate, strengthens it and ensures the durability of the styling for more than 21 days. The **NATURAL VIBES** line contains 10 bases in natural colours, including whites, nude shades, pinks and purples!

AVAILABLE CAPACITY: 10 ml



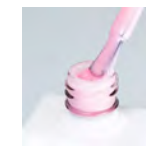
BYSSUS



CASHMERE



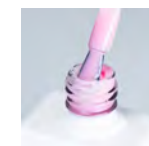
COTTON



HESSIAN



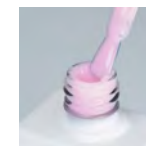
LINEN



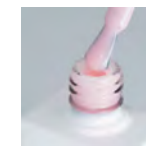
MODAL



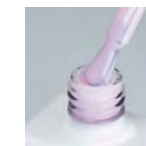
SILK



SISAL



VICARA



VICARA





MANICURE
UV/LED Hard Top Coat

INVERAY UV/LED Hard Top Coat product line is our response to constantly growing demand for a professional HEMA-free product of the highest quality in a modern formula. INVERAY UV/LED Top Coat is a light-curing gel polish of the latest generation. The carefully developed formula of the product allows for extremely easy application and shows maximum shine without cracking and scratching. Durability of gel polish manicure is extended to 21 days+. Product doesn't require wiping with cleaner.

Hard Top Coat Ultimate Gloss shows maximum shine without cracking and scratching.

Hard Top Coat Matt provides perfect even matt finish without smudges and durability for 21 days+.

Hard Top Coat Colour Protector protects against yellowing and colour changes of gel polishes caused by UV rays. Recommended for saturated neon colours and/or for long exposure to bright sunlight.

Milky Hard Top Coat giving a milky finish without discolouration or yellowing.

AVAILABLE CAPACITY: 10 ml



MANICURE Builder Gel

Builder Gel is a single-phase, self-leveling building gel with an innovative 12-free-of formula free of allergens and irritants. With the help of Builder Gel you can build different shapes of nails of any length. It is also great for hardening and strengthening the natural nail plate, which is weak and brittle, as well as for the extension of natural nails or the reconstruction of bitten/broken nails. Builder Gel is a self-leveling product and is viscous enough to prevent it from flowing onto the cuticles. Under the influence of the heat of the hand, the gel becomes even more plastic and it is easily spread with a brush, giving the nails the right shape. It hardens evenly and smoothly, without the formation of pores. The cured gel is susceptible to filing, which saves time on developing the appropriate shape of the nail, and at the same time, during filing no air pockets are formed on the prepared edges.

AVAILABLE CAPACITIES: 15 ml, 50 ml



BUILDER GEL CLEAR



BUILDER GEL WHITE



BUILDER GEL MILKY WHITE



BUILDER GEL COVER NATURAL



BUILDER GEL COVER PINK



BUILDER GEL COVER WARM



BUILDER GEL COVER BB GOLD



BUILDER GEL COVER BB SILVER



BUILDER GEL COVER FRENCH PINK



MANICURE
Butter Builder Gel

Butter Builder Gel is a single-phase gel, thick gel with an innovative 12-free-of formula. Thanks to its appropriately dense Butter Builder Gel provides full control over the application. The consistency is like jelly/butter, product stays in the place where we put it, but during the work it becomes more plastic and have a properties of self-levelness. Do not floating on cuticles. Thanks to this properties Butter Builder Gel is perfect for reverse french manicure, fantasy french and extreme extensions.

Butter Builder Gel works seamlessly with Inveray Dual Forms and professional paper forms. Designed for all types of nail plates, it excels in the hardening of the natural nail plate, extension, reconstruction and correction of nails growing downward.

The cured gel is susceptible to filing, which saves time on developing the appropriate shape of the nail, and at the same time, during filing no air pockets are formed on the prepared edges.
AVAILABLE CAPACITY: 15 ml





**Manicure
PolyShape System**

The PolyShape System is an innovative acrylic gel with a 12-free-of formula that combines the durability of acrylic with the flexibility of gel. Designed for all types of nail plates, it excels in the hardening of the natural nail plate, extension, reconstruction, and correction of nails growing downward. PolyShape is the perfect solution for constructing a French manicure and achieving extreme extensions, as its hardness maintains the desired shape effectively.

Thanks to its appropriately dense, non-self-leveling consistency, PolyShape is excellent for extending all nails simultaneously, providing full control over the application. It works seamlessly with both Inveray PolyShape upper forms and traditional paper forms. Using the dedicated brush and PolyShape liquid ensures efficient and rapid attainment of the desired shape for extended nails. PolyShape acrylic gels have a reduced polymerization temperature, so there is minimal to no sensation of burning during curing process when applied to a healthy and heat-insensitive nail plate.

For maximum styling durability, it is recommended to perform a wipe with PolyShape Base Coat before applying the acrylic gel.

AVAILABLE CAPACITY: 30 g





MANICURE Nail Prep pH Equalizing Dehydrator

INVERAY Nail Prep pH Equalizing Dehydrator is prep agent preparing natural nail plate for long lasting gel polish manicure. Perfectly degreases and cleanses the nail plate, so all the products placed on it stick tightly to natural nail plate. Absolutely unique properties allow this product ensure that oils and grease are removed from the nail plate.

**Get the INVERAY
Nail Prep pH Equalizing Dehydrator for:**
extending durability of gel manicure, increasing adhesion of gel polishes to natural nail plate, removing oils and grease from nail plate.

AVAILABLE CAPACITY: 10 ml



INVERAY®
NATURAL BEAUTY

office@inveray.com

0048 883 661 881

www.inveray.com



Cuticle Softener & Remover

INVERAY Cuticle Softener & Remover pH 13 Alkaline Agent is an immediately softening water-based gel required for easier push-back of the cuticles. Product contains high concentration of glycerin and shows intensively hydrating action to cuticles. Formulated as pH 13 product with potassium hydroxide alkaline agent which immediately softens the nail contour in order to allow efficient cuticle care.

Get the INVERAY Softener & Remover for: quickly caring of dry ragged cuticles, hydrating, softening.

AVAILABLE CAPACITY: 10 ml



INVERAY®
NATURAL BEAUTY

office@inveray.com

0048 883 661 881

www.inveray.com



Cleaner Prep & Wipe Dehydrator

INVERAY Cleaner Prep & Wipe Dehydrator is designed to prepare and finish nail manicure. Perfectly removes all residues and oily layer increasing product's adhesion. Product applicable to various methods: gel polish, acrylics and hard gel technique to remove tacky layer and leave nail surface perfectly shining.

Get the INVERAY Cleaner for:
preparing nail plate for manicure, removing residues and oily layer from nail plate, perfectly dehydrating, removing tacky layer, giving perfect shine after removing tacking layer, it's applicable to various methods of nail stylisation, it has antibacterial properties.

Polish Remover Nourishing Solution Gel-Off-Gel

INVERAY Gel-Off Gel Polish Remover Nourishing solution is a professional acetone-based soak-off liquid formulated to easily remove nail enhancement products. Quickly dissolves even thick layer of gel polish. Designed to keep nail plate healthy looking and protected against damages. Doesn't dry cuticle area.

AVAILABLE CAPACITY: 100 ml, 500 ml, 1000 ml

PolyShape Liquid is a professional solution designed for the PolyShape system. It enables precise distribution and modeling of acrylic gel on the nail surface and upper/lower extension form. With PolyShape Liquid, achieving the desired shape for extended nails and achieving perfect smoothness becomes effortless.

AVAILABLE CAPACITY: 500 ml,





DISINFECTING AND WASHING PREPARATION Dezyn DGU+ and Pro Hand Cleaner

INVERAY Dezyn GU+ is intended for disinfecting and washing preparation. Vegan composition of tool&equipment sanitizing liquid. Formulated without alcohol content. The agent removes viruses, bacteria, molds, fungi.

Get the INVERAY Dezyn DGU+ for: preparaton for the food industry for rooms, surfaces and equipment, also in contact with food, e.g. refrigerated counters, refrigerators, countertops, walls, for general use in public places, transport and industrial facilites, for cleaning surfaces in health care and medical facilites, in hospitals (outside the clinical area), restaurants, kitchens, hotels for all types of surfaces, including upholstery, door handles, doors, stairs, foors, bathrooms.

SPECIFICATIONS:

appearance: colorless liquid

aroma: characteristic, soapy

consistency: liquid

pH value in concentrate: approx. 10.5

density: 1.005 g/cm³

A specialized preparation ready for use. Safe for people. Virucidal and bactericidal - confirmed by tests (kills Coronavirus viruses in seconds).

INVERAY Pro Hand Cleaner is a vegan composition of sanitizing product with 60% highest quality alcohol content and special blend of moisturizers - kills 99,9% of bacteria. Contains pharmaceutical glycerin with strongly nourishing and moisturizing properties to calm irritated skin. Cocamidopropyl betaine effectively removes impurities whilst preventing growth of microorganisms on skin surface. Product easily absorbs and doesn't require using water. Spray bottle provides comfortable application and keeps product hygienic until finished. Dermatologically tested.

AVAILABLE CAPACITY: 250 ml





UV/LED PROFESSIONAL SALON LAMP

Non-heat curing technology designed for perfect curing effect with minimised UV/LED radiation.

This lamp was designed to perfectly cure the manicure and pedicure stylization. Diodes inside are strategically placed to avoid any "blind spots". The lamp has 3 different programs (30/60/90 s).

PRODUCT's FEATURES:

- open triangle design which allows for free air circulation and to use it for both manicure/pedicure
- perfect for sensitive nails and hand skin (minimize UV/LED radiation on hand skin)
- curved design which keeps all of the UV/LED light directed at the nail plate
- position of the diodes which avoid any „blind spots" - well positioned diodes for thumbs
- open back to provide proper air circulation and non-heat properties
- dual light technology 365nm + 405nm which enables fast and precise curing both UV and LED products
- automatic infrared sensor
- LCD screen with timer
- three timer options 30, 60, 90s
- easy-clean surface without bottom (eliminated problem with dirty bottom after many times use)

Lamp should be cleaned/sanitized with Inveray Cleaner/ Dezyn GDU+



BRUSHES and other tools

Professional Gel Brushes for forming and building nails with the gel method PolyShape system and for many decorative techniques. Well-profiled shape of hair enables precise application of the gels and gel nail polishes. Cap of the brush provides additional protection against dust and contamination.

Available Inveray Brushes: #6 Oblique Gel Brush, #6 Flat Gel Brush, #6 Oval Gel Brush, Nail Art Gel Brush, 5mm Liner Gel Brush, 7mm Liner Gel Brush, #ombre Gel Brush, #PolyShape Gel Brush.

Professional, double-sided crescent file for reducing length and removing excess product fast. Shape of the file allows full control for precise shaping and precise effortless motion. Thanks to its ergonomic shape, it fits well in the hand. The ruler placed on the file allows to keep same length of the nails.

AVAILABLE GRADATIONS: 100/100, 100/180, 180/240

Professional quality four-sided buffer block for nails with 100/100 gradation. It is used to even out unevenness and effortlessly matt the nail plate.

Professional disposable adhesive nail forms for professional nail extensions. Provide perfect stability and sculpting control to nails. Thanks to the precise line of the smile (cut-out of the form), the form perfectly adheres to the nail, and you can also adjust it by cutting it on the sides for the difficult to fit plate. Strong glue secures the form against slipping and detaching.

A set of professional upper forms for extending nails using the PolyShape system. They ensure precise modeling and the creation of a C-curve, thanks to their appropriately contoured shape. The kit includes the most popular shapes: almond, coffin, square, and oval, available in 12 sizes, along with innovative 4 types of silicone overlays for constructing a French manicure. All the essentials for working with the PolyShape system are conveniently packed in one box, catering to the needs of various clients and accommodating different nail plate sizes.



FRENCH MANICURE SILICON PAD SET



ALMOND COFFIN SQUARE OVAL





Gel Polish Display Stand

An exclusive and stylish way to present Inveray gel polishes. The four-tier stand highlights the beauty of the collection and attracts attention.

Four shelves hold up to 32 bottles, creating a harmonious and luxurious arrangement. Four carefully designed shelves display colors in a clear and aesthetically pleasing manner, encouraging customers to explore shades and discover inspiration.

Inveray Cosmetic Apron

An elegant yet incredibly practical apron designed for nail technicians who value impeccable appearance and comfort while working. Made of high-quality, stain-resistant fabric, it protects clothing from dust and chemicals while enhancing the professionalism of the salon.

Key features:

- Adjustable neck strap - easily adjusts to any body shape and is lightweight for all-day wear.
- A spacious, double front pocket - keeps all your essentials close at hand.
- Exclusive Inveray logo - a subtle detail that enhances the brand's prestige in the eyes of clients.

Nail art photo backdrop

The perfect backdrop for manicure photos that showcases creativity and adds a professional touch. The pad has a matte finish on one side and a white background on the other, making it versatile and suitable for various photographic needs.



Gel Nail Polish
LUXURY COLLECTION

- DENSITY
- SELF-LEVELING
- COVERAGE
- GLOSS
- DURABILITY
- ADHESION
- SMELL



Hard Top Coat
Ultimate Gloss

- DENSITY
- SELF-LEVELING
- COVERAGE
- GLOSS
- DURABILITY
- ADHESION
- SMELL



Hard Top Coat
Colour Protector

- DENSITY
- SELF-LEVELING
- COVERAGE
- GLOSS
- DURABILITY
- ADHESION
- SMELL



Base Coat
Cement Gluing

- DENSITY
- SELF-LEVELING
- COVERAGE
- GLOSS
- DURABILITY
- ADHESION
- SMELL



Base Coat RUBBER
Cover Pink

- DENSITY
- SELF-LEVELING
- COVERAGE
- GLOSS
- DURABILITY
- ADHESION
- SMELL



Base Coat RUBBER
Pink

- DENSITY
- SELF-LEVELING
- COVERAGE
- GLOSS
- DURABILITY
- ADHESION
- SMELL



Base Coat RUBBER
Clear

- DENSITY
- SELF-LEVELING
- COVERAGE
- GLOSS
- DURABILITY
- ADHESION
- SMELL



Base Coat RUBBER
Milky White

- DENSITY
- SELF-LEVELING
- COVERAGE
- GLOSS
- DURABILITY
- ADHESION
- SMELL



Base Coat Builder in a Bottle
Cover

- DENSITY
- SELF-LEVELING
- COVERAGE
- GLOSS
- DURABILITY
- ADHESION
- SMELL



Base Coat Builder in a Bottle
Pink

- DENSITY
- SELF-LEVELING
- COVERAGE
- GLOSS
- DURABILITY
- ADHESION
- SMELL



Base Coat Builder in a Bottle
Clear

- DENSITY
- SELF-LEVELING
- COVERAGE
- GLOSS
- DURABILITY
- ADHESION
- SMELL



Base Coat Builder in a Bottle
Milky White

- DENSITY
- SELF-LEVELING
- COVERAGE
- GLOSS
- DURABILITY
- ADHESION
- SMELL



UV/LES Base Coat Natural Vibes Byssus

- DENSITY
- SELF-LEVELING
- COVERAGE
- GLOSS
- DURABILITY
- ADHESION
- SMELL



UV/LES Base Coat Natural Vibes Cashmere

- DENSITY
- SELF-LEVELING
- COVERAGE
- GLOSS
- DURABILITY
- ADHESION
- SMELL



UV/LES Base Coat Natural Vibes Cotton

- DENSITY
- SELF-LEVELING
- COVERAGE
- GLOSS
- DURABILITY
- ADHESION
- SMELL



UV/LES Base Coat Natural Vibes Cotton

- DENSITY
- SELF-LEVELING
- COVERAGE
- GLOSS
- DURABILITY
- ADHESION
- SMELL



UV/LES Base Coat Natural Vibes Linen

- DENSITY
- SELF-LEVELING
- COVERAGE
- GLOSS
- DURABILITY
- ADHESION
- SMELL



UV/LES Base Coat Natural Vibes Modal

- DENSITY
- SELF-LEVELING
- COVERAGE
- GLOSS
- DURABILITY
- ADHESION
- SMELL



UV/LES Base Coat Natural Vibes Silk


- DENSITY
- SELF-LEVELING
- COVERAGE
- GLOSS
- DURABILITY
- ADHESION
- SMELL



UV/LES Base Coat Natural Vibes Sisal

- DENSITY
- SELF-LEVELING
- COVERAGE
- GLOSS
- DURABILITY
- ADHESION
- SMELL





HEMA-FREE
Formula 13 free of

Self leveling

21+ days


Odour free

Care manucure

Vegan

UV/LES Base Coat Natural Vibes Vicara

DENSITY: 4/5
SELF-LEVELING: 5/5
COVERAGE: 4/5
GLOSS: 5/5
DURABILITY: 5/5
ADHESION: 5/5
SMELL: 1/5



HEMA-FREE
Formula 13 free of

Self leveling

21+ days


Odour free

Care manucure

Vegan

UV/LES Base Coat Natural Vibes Wool

DENSITY: 4/5
SELF-LEVELING: 5/5
COVERAGE: 4/5
GLOSS: 5/5
DURABILITY: 5/5
ADHESION: 5/5
SMELL: 1/5



HEMA-FREE
Formula 13 free of

Self leveling

21+ days

Odour free

Care manucure

Vegan

UV/LED Milky Top Coat

DENSITY: 4/5
SELF-LEVELING: 5/5
COVERAGE: 4/5
GLOSS: 5/5
DURABILITY: 5/5
ADHESION: 5/5
SMELL: 1/5



- Builder Gel Clear**
- DENSITY
 - SELF-LEVELING
 - COVERAGE
 - GLOSS
 - DURABILITY
 - ADHESION
 - SMELL



- Builder Gel White**
- DENSITY
 - SELF-LEVELING
 - COVERAGE
 - GLOSS
 - DURABILITY
 - ADHESION
 - SMELL



- Builder Gel Cover Warm**
- DENSITY
 - SELF-LEVELING
 - COVERAGE
 - GLOSS
 - DURABILITY
 - ADHESION
 - SMELL



- Builder Gel Cover Natural**
- DENSITY
 - SELF-LEVELING
 - COVERAGE
 - GLOSS
 - DURABILITY
 - ADHESION
 - SMELL



- Builder Gel Cover Pink**
- DENSITY
 - SELF-LEVELING
 - COVERAGE
 - GLOSS
 - DURABILITY
 - ADHESION
 - SMELL



- Builder Gel Cover BB Silver**
- DENSITY
 - SELF-LEVELING
 - COVERAGE
 - GLOSS
 - DURABILITY
 - ADHESION
 - SMELL



- Builder Gel Milky White**
- DENSITY
 - SELF-LEVELING
 - COVERAGE
 - GLOSS
 - DURABILITY
 - ADHESION
 - SMELL



- Builder Gel Cover French Pink**
- DENSITY
 - SELF-LEVELING
 - COVERAGE
 - GLOSS
 - DURABILITY
 - ADHESION
 - SMELL



- Builder Gel Cover BB Gold**
- DENSITY
 - SELF-LEVELING
 - COVERAGE
 - GLOSS
 - DURABILITY
 - ADHESION
 - SMELL



HEMA-FREE 13-free-of formula



GEL POLISH TECHNIQUE



STEP 1

Push the cuticles gently back with wooden stick.



STEP 2

Remove old gel polish manicure by drill bit or lightly buff off top coat with nail file (gradation 100) until it becomes matte. Apply Nail & Cuticle Vitamin Booster to protect skin against dryness and apply Polish Remover on each nail and wrap with foil. Leave Remover on 10 minutes. Remove the residue with a wooden stick.



STEP 3

Use nail file to shape the nails:

- the medium-grained side (180) is ideal for modeling the edges of the nail
- the fine-grained side (240) can be used to smooth and shape natural or sculpted nails
- the coarse-grained side (100) will facilitate removal of the previous styling



STEP 4

Use buffer to matte the nail plate.



STEP 5

Apply Intensive Rebuilding Serum on your hands to protect them from the harmful blue light radiation coming from the curing lamp.



STEP 6

Use Cleaner to cleanse and thoroughly degrease the nail plate.



STEP 7

Apply Nail Prep to perfectly remove oils and grease, so all the Inveray products placed on it stick tightly to natural nail plate.



STEP 8

Apply thin layer of UV/LED Base Coat Cement Gluing. To increase the durability of stylization, perform a rubbing motion. This short back and forth movement, starting from the free edge, moving towards the skins is much more efficient compared to a single move. After apply UV/LED Base Coat cure under the Inveray UV/LED lamp for 30 seconds.



STEP 9

INVERAY gel polishes, UV/LED Bases and Tops should be cured for 30 seconds under a Inveray UV / LED lamp. White, black (dark), green and yellow shades of Inveray gel polishes should be cured for 60 seconds.



STEP 10

Apply a coat of UV / LED Gel Nail Polish and cure under .the UV/LED lamp for 30 seconds. Most of them provide full coverage with a single layer!



STEP 11

Apply a thin layer of UV/LED Hard Top Coat No Wipe, secure the free edge and cure under the UV/LED lamp. for 30 seconds.



STEP 12

After ending manicure apply the Elixir on the cuticles and drop a bit of Elixir under nail plate.



STEP 1

Push the cuticles gently back with wooden stick.



STEP 2

Use nail file to shape the nails:

- the medium-grained side (180) is ideal for modeling the edges of the nail
- the fine-grained side (240) can be used to smooth and shape natural or sculpted nails
- the coarse-grained side (100) will facilitate removal of the previous styling



STEP 3

Use buffer to matte the nail plate.



STEP 4

Apply Intensive Rebuilding Serum on your hands to protect them from the harmful blue light radiation coming from the curing lamp.



STEP 5

Use Cleaner to cleanse and thoroughly degrease the nail plate.



STEP 6

Apply Nail Prep to perfectly remove oils and grease, so all the Inveray products placed on it stick tightly to natural nail plate.



STEP 7

Apply thin layer of UV/LED Base Coat Cement Gluing. To increase the durability of stylization, perform a rubbing motion. This short back and forth movement, starting from the free edge, moving towards the skins is much more efficient compared to a single move. After apply UV/LED Base Coat cure under the Inveray UV/LED lamp for 30 seconds.



STEP 8

Place the nail extension template so that it adheres properly to the nail.



STEP 9

Using a brush, spread a thin layer of Builder Gel on the nail plate and on the template and cure under the Inveray UV/LED lamp for 60 seconds.



STEP 10

Apply another layer of Builder Gel on the nail plate, shape appropriately, then cure in the UV / LED lamp, after 15 seconds, remove the hand from under the lamp and clamp the gel into a tunnel, then cure again for 60 seconds. Wipe the dispersion layer with Cleaner and use a file to shape the nails.



STEP 11

Apply a coat of UV / LED Gel Nail Polish and cure under the UV/LED lamp for 30 seconds. Most of them provide full coverage with a single layer!



STEP 12

Apply a thin layer of UV/LED Hard Top Coat No Wipe, secure the free edge and cure under the UV/LED lamp. for 30 seconds.



STEP 13

After ending manicure apply the Elixir on the cuticles and drop a bit of Elixir under nail plate.



STEP 1

Push the cuticles gently back with wooden stick.



STEP 2

Use nail file to shape the nails:

- the medium-grained side (180) is ideal for modeling the edges of the nail
- the fine-grained side (240) can be used to smooth and shape natural or sculpted nails
- the coarse-grained side (100) will facilitate removal of the previous styling



STEP 3

Use buffer to matte the nail plate.



STEP 4

Use Cleaner to cleanse and thoroughly degrease the nail plate.



STEP 5

Use Cleaner to cleanse and thoroughly degrease the nail plate.



STEP 6

Apply Nail Prep to perfectly remove oils and grease, so all the Inveray products placed on it stick tightly to natural nail plate.



STEP 7

Apply thin layer of UV/LED Base Coat Cement Gluing. To increase the durability of stylization, perform a rubbing motion. Base Coat Cement Gluing has a thinner consistency compared to other bases, making it ideal for the rubbing technique on the nail plate. It also protects the nail plate from potential pigment staining from the colored Base Coat. Cure under the Inveray UV/LED lamp for 30 seconds.

STEP 8

Next use one of our three types of Base Coat



STEP 9

Apply a thin layer of the Base Coat Rubber or Natural Vibes with a smooth movement, cure under the UV/LED lamp for 30 sec.



STEP 10

Apply a very thin layer of the Base Coat Builder in a Bottle with a smooth movement on the natural nail plate. If you want to extend your natural nail, start by properly placing the nail extension form, and then apply the Base Coat Builder in a Bottle to create the framework. Remember that using the Base, you can extend the nail up to a maximum of 7 mm. Then cure under the UV/LED lamp for 30 sec. Then apply another thin layer and model the shape of the nail and cure under the UV/LED.



STEP 11

Apply a coat of UV / LED Gel Nail Polish or directly with a Top Coat to preserve the base color and create a subtle manicure. Cure under the UV/LED lamp for 30 seconds.



STEP 12

After ending manicure apply the Elixir on the cuticles and drop a bit of Elixir under nail plate.





GEL POLISH MANICURE REMOVAL

One of the best methods for removing a manicure is the proper use of a drill machine. If you haven't taken a course on proper drill machine techniques, you can learn the method of removing a manicure using Remover.



STEP 1

Push the cuticles gently back with wooden stick.



STEP 2

Apply Nail & Cuticle Vitamin Booster to protect skin against dryness.



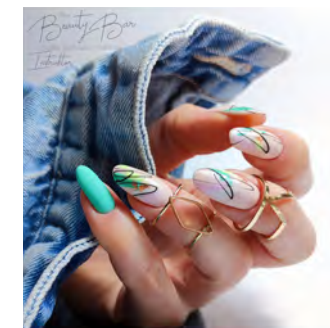
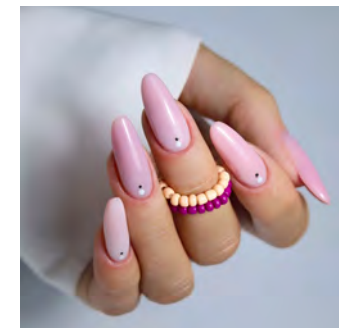
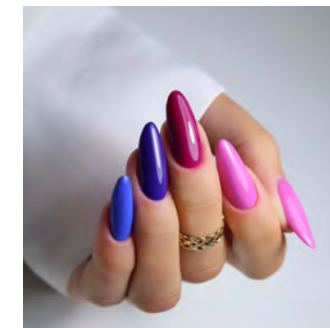
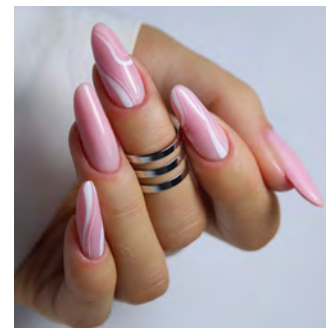
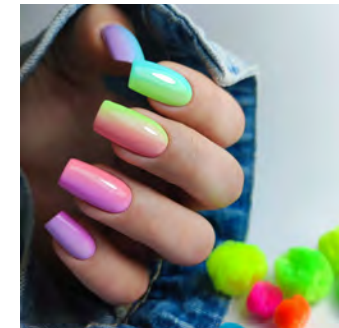
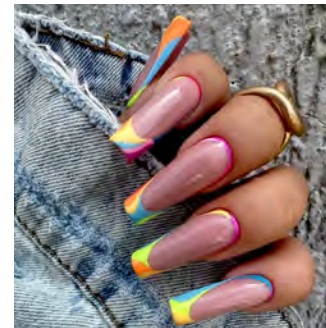
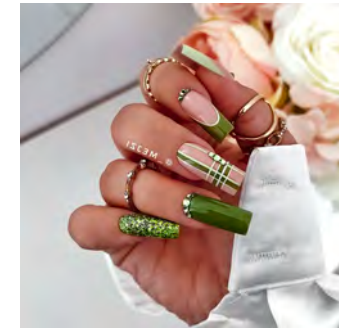
STEP 3

Drill bit or lightly buff off Top Coat with nail file (gradation 100) until it becomes matte.



STEP 4

Apply Polish Remover on each nail and wrap with foil. Leave Remover on 10 minutes. Remove the residue with a wooden stick.





Where we've been

COSMOPROF
WORLDWIDE BOLOGNA

beautyworld

MIDDLE EAST

S A L Ó N
LOOK

 *beautyistanbul* Ufi Approved International Event

PROFESSIONAL
beauty
LONDON

B
EXPO BEAUTY
BARCELONA

**BEAUTÉ
SÉLECTION**
{NANTES}



**FERIA
VALENCIA**

INVERAY®
NATURAL BEAUTY

office@inveray.com

0048 883 661 881

www.inveray.com

We've been featured in:





Our Awards & Achievements:



BEAUTY FORUM
Award Poland 2022



**LOVE
COSMETICS
AWARDS**

#brand #emotions #quality



INVERAY®
NATURAL BEAUTY

✉ office@inveray.com


☎ 0048 883 661 881

🌐 www.inveray.com


Comparison and characteristics of Inveray UV/LED Top Coat:

 INVERAY® LUXURY COLLECTION	UV/LED Top Coat Ultimate Gloss	UV/LED Top Coat Matt	UV/LED Top Coat Colour Protector	UV/LED Milky Top Coat
Polymerization in an LED lamp with a power below 54 W	not less than 60 sec	not less than 60 sec	not less than 60 sec	not less than 60 sec
Polymerization in an LED lamp with a power above 54 W	30 sec	30 sec	30 sec	30 sec
Polymerization in an UV lamp with a power 36 W	120 sec	120 sec	120 sec	120 sec
Sticky layer after curing	no	no	no	no
Requires cleansing with a Cleaner after curing	no	yes	no	no
Wiping the cured UV/LED gel polish with a Cleaner before applying the UV/LED Top Coat	no	yes	no	no
Consistency	medium density	medium density	medium density	medium density
Presence of a UV filter	no	no	yes	no
Self-leveling formula	yes	yes	yes	yes
Allergy-friendly 12-free-of formula	yes	yes	yes	yes
Time after curing the UV/LED Top coat to apply a care product	not less than 30 sec	not less than 30 sec	not less than 30 sec	not less than 30 sec

Comparison and characteristics of Inveray UV/LED Base Coat:


 INVERAY® LUXURY COLLECTION	UV/LED Base Coat Cement GLuing	UV/LED Base Coat Rubber	UV/LED Base Coat Builder in a Bottle	Natural Vibes UV/LED Base Coat
Polymerization in an LED lamp with a power below 54 W	not less than 60 sec	not less than 60 sec	not less than 60 sec	not less than 60 sec
Polymerization in an LED lamp with a power above 54 W	30 sec	30 sec	30 sec	30 sec
Polymerization in an UV lamp with a power 36 W	120 sec	120 sec	120 sec	120 sec
Sticky layer after curing	yes	yes	yes	yes
Consistency	medium density	dense	dense	dense
Self-leveling formula	yes	yes	yes	yes
Allergy-friendly 12-free-of formula	yes	yes	yes	yes
Elasticity	medium elastic	very flexible	hard	medium elastic
Possibility to extend the natural nail	no	no	Yes, up to a max. of 7 mm	no
Additional recommendations	use as a rubbing	Before application, apply Cement Gluing Base by rubbing it on to extend the durability and adhesion of the manicure.	Before application, apply Cement Gluing Base by rubbing it on to extend the durability and adhesion of the manicure.	Before application, apply Cement Gluing Base by rubbing it on to extend the durability and adhesion of the manicure.

Comparison and characteristics of Inveray Builder Gels:

 INVERAY® LUXURY COLLECTION	CLEAR	WHITE	MILKY WHITE	COVER NATURAL
Polymerization in an LED lamp with a power below 54 W	not less than 90 sec	not less than 120 sec	not less than 90 sec	not less than 90 sec
Polymerization in an LED lamp with a power above 54 W	60 sec	90 sec	60 sec	60 sec
Polymerization in an UV lamp with a power 36 W	180 sec	240 sec	180 sec	180 sec
Sticky layer after curing	yes	yes	yes	yes
Consistency	medium density	medium density	medium density	medium density
Self-leveling formula	yes	yes	yes	yes
Allergy-friendly 12-free-of formula	yes	yes	yes	yes
Elasticity	works with the natural nail plate	works with the natural nail plate	works with the natural nail plate	works with the natural nail plate
Additional recommendations	Before application, apply Cement Gluing Base by rubbing it on to extend the durability and adhesion of the manicure	Builder Gel White is recommended for use on the white French tip and other decorations.Before application, apply Cement Gluing Base by rubbing it on to extend the durability and adhesion of the manicure.	Before application, apply Cement Gluing Base by rubbing it on to extend the durability and adhesion of the manicure.	Before application, apply Cement Gluing Base by rubbing it on to extend the durability and adhesion of the manicure.
Colour	clear	white	milky white	natural, light pink
Adhesion	high level	high level	high level	high level
Generates heat during polymerization	only on sensitive nail plate	only on sensitive nail plate	only on sensitive nail plate	only on sensitive nail plate
Durability	3-4 weeks	3-4 weeks	3-4 weeks	3-4 weeks
Solubility in acetone-containing liquids	no	no	no	no
Nail plate reinforcement (smoothing the nail plate and correcting defects)	yes	no, it is used for decoration	yes	yes

COVER PINK	COVER FRENCH PINK	COVER WARM	COVER BB GOLD	COVER BB SILVER
not less than 90 sec	not less than 90 sec	not less than 90 sec	not less than 90 sec	not less than 90 sec
60 sec	60 sec	60 sec	60 sec	60 sec
180 sec	180 sec	180 sec	180 sec	180 sec
yes	yes	yes	yes	yes
medium density	medium density	medium density	medium density	medium density
yes	yes	yes	yes	yes
yes	yes	yes	yes	yes
works with the natural nail plate	works with the natural nail plate	works with the natural nail plate	works with the natural nail plate	works with the natural nail plate
Before application, apply Cement Gluing Base by rubbing it on to extend the durability and adhesion of the manicure.	Before application, apply Cement Gluing Base by rubbing it on to extend the durability and adhesion of the manicure.	Before application, apply Cement Gluing Base by rubbing it on to extend the durability and adhesion of the manicure.	Before application, apply Cement Gluing Base by rubbing it on to extend the durability and adhesion of the manicure.	Before application, apply Cement Gluing Base by rubbing it on to extend the durability and adhesion of the manicure.
light pink	bubble gum colour	warm pinkish-nude	pink with golden flecks	pink with silver flecks
high level	high level	high level	high level	high level
only on sensitive nail plate	only on sensitive nail plate	only on sensitive nail plate	only on sensitive nail plate	only on sensitive nail plate
3-4 weeks	3-4 weeks	3-4 weeks	3-4 weeks	3-4 weeks
no	no	no	no	no
yes	yes	yes	yes	yes

Consumption of Inveray products*

 INVERAY® LUXURY COLLECTION	capacity	number of manicures	material consumption per manicure, ml
UV/LED gel polish (1 coat)	10 ml	40-50	0,2
UV/LED Base Coat C ement Gluing	10 ml	150- 200	0,5
UV/LED Base Coat Rubber	10 ml	40-50	0,2
UV/LED Base Coat Builder in a Bottle	10 ml	40-50	0,2
UV/LED Base Coat Natural Vibes	10 ml	40-50	0,2
UV/Led Top Coat Ultimate Gloss	10 ml	80-100	0,1
UV/LED Top Coat Matt	10 ml	80-100	0,1
UV/LED Top Coat Colour Protector	10 ml	80-100	0,1
UV/LED Milky Top Coat	10 ml	40-50	0,2
Builder Gel 15 ml (on natural nail plate)	15 ml	50	0,3
Builder Gel 50 ml (on natural nail plate)	50 ml	166	0,3
Nail Prep	10 ml	500	0,02

* Average calculations may vary depending on the length of the nail plate, its width, and the application technique.



Frequently Asked Questions

1. How to apply Cement Gluing base?

To enhance the durability and adhesion of your manicure, we recommend using the rubbing method.

2. How often should I replace my UV/LED lamp?

We recommend replacing the lamp at least once a year with regular use to ensure it's power remains optimal.

3. Do I need to use Cleaner and Nail Prep before applying the base?

We recommend using both products. Cleaner removes oils and impurities from the nail plate, while Nail Prep eliminates any residual moisture. Both products have an impact on the longevity of your stylization.

4. Can I use white Builder Gel for nail extension?

White Builder Gel is typically used to create the white French tip or other decorations by applying thin layers. The structure is usually built using products like Builder Gel Clear, with white gel used for the tip.

5. Why does the Top Coat Matt leave streaks after curing?

To achieve a perfectly matte finish, we recommend removing the sticky layer with Cleaner after curing colored polish or base. After Cleaner has evaporated, apply the Top Coat Matt evenly and cure.

6. Can I apply cuticle oil immediately after curing the Top Coat?

After curing the Top Coat, wait for about 30 seconds for it to cool before applying any skincare products.

7. Are all Inveray light-curable products formulated as 12-free-of?

Yes, all Inveray products are free from 12 commonly used allergenic and irritating substances.

8. Are all Inveray products vegan?

Yes, all Inveray products are vegan and not tested on animals.

9. Why should I use Cement Gluing base as a rub before other Inveray Base Coat (especially with colour)?

We recommend using Cement Gluing base to increase adhesion and the longevity of your manicure. Cement Gluing base has a thinner consistency compared to other bases, making it ideal for the rubbing technique on the nail plate. It also protects the nail plate from potential pigment staining from the colored Base Coat.

10. How can I minimize the impact of Remover on drying out my cuticles?

We recommend applying cuticle oil before using Remover to further moisturize and protect your cuticles from the drying effects of Remover.

11. How can I minimize the effect of UV/LED lamp light on my skin?

During a manicure treatment, apply Intensive Rebuilding Serum to the skin on your hands to protect it from the harmful blue light emitted by UV/LED lamps.

12. Do nails weaken during styling?

No, correctly used products and properly executed manicures do not weaken or damage the nail plate. One of the main causes of nail weakening can be improper removal of manicure or the use of incorrect products.

13. Why should I apply elixir under the nail plate after a manicure treatment?

Inveray Elixir is designed to moisturize, nourish, and strengthen the nail plate after a manicure treatment.

NAME	SKU	EAN code	NAME	SKU	EAN code	NAME	SKU	EAN code	NAME	SKU	EAN code
1. Luxury Repair Elixir	CO-LRE	5903684217076	79. N°49 BISCOTTI CREAM	IH49	5903684217731	160. N°130 LILAC LADY	IH130	5904474816837	238. Builder Gel Cover BB GOLD 15ml	BG-C50	5904474816790
2. Luxury Moisturizing Elixir	CO-LME	5903684217083	80. N°50 DIGNITY	IH50	5903684217748	161. N°131 MARRY ME	IH131	5904474816844	239. Builder Gel Cover BB GOLD 50ml	BG-CBBG15	5904474816783
3. Luxury Nourishing Elixir	CO-LNE	5903684217090	81. N°51 EXCELLENCY	IH51	5903684217755	162. N°132 NORAL STAR	IH132	5904474816851	240. Builder Gel Cover NATURAL 15ml	BG-CBBG50	5904474816776
4. Intensive Rebuilding Serum Dark Spot Corrector - Hands Therapy	IRS-MG	5903684217106	82. N°52 SOPHISTICATION	IH52	5903684217762	163. N°133 LOLLIPOP	IH133	5904474816905	241. Builder Gel Cover NATURAL 50ml	BG-CN15	5904474816714
5. Nail & Cuticle Vitamin Booster Iside	IVB-I	5903684217199	83. N°53 STYLE	IH53	5903684217779	164. N°134 CHARMING CLEMENTINE	IH134	5904474816912	242. Builder Gel Cover BB SILVER 15ml	BG-CN50	5904474816721
6. Nail & Cuticle Vitamin Booster Gaia	IVB-G	5903684217205	84. N°54 SPLENDOR	IH54	5903684217786	165. N°135 ELECTRIC YELLOW	IH135	5904474816929	243. Builder Gel Cover BB SILVER 50ml	BG-CBBS15	5904474816769
7. Cuticle Softener & Remover	ICR	5903684217113	85. N°55 ADMIRATION	IH55	5903684217793	166. N°136 LIME LIGHT	IH136	5904474816936	244. Builder Gel Cover PINK 15ml	BG-CBBS50	5904474816752
8. UV/LED HARD TOP COAT Ultimate Gloss. No Wipe	IHUG	5903684217045	86. N°56 EMOTION	IH56	5903684217809	167. N°137 PARAKEET PARADISE	IH137	5904474816950	245. Builder Gel Cover PINK 50ml	BG-CP15	5904474816707
9. UV/LED HARD TOP COAT MATT Perfect Matt Finish No Wipe	IHPM	5903684217854	87. N°57 NOBILITY	IH57	5903684217816	168. N°138 PERSIAN BLUE	IH138	5904474816967	246. Builder Gel Cover WARM 15ml	BG-CP50	5904474816691
10. UV/LED Top Coat No Wipe Colour Protector	IHCP	5905108772185	88. N°58 BALANCE	IH58	5903684217823	169. N°139 CATWALK QUEEN	IH139	5904474816974	247. Builder Gel Cover WARM 50ml	BG-CW15	5904474816745
11. UV/LED Milky White Top Coat No Wipe		5905108772727	89. N°59 INTELLIGENCE	IH59	5903684217830	170. N°140 CORAL	IH140	5904474816981	248. Builder Gel WHITE 15ml	BG-CW50	5904474816738
12. UV/LED Base Coat Cement Gluing	IHCG	5903684217069	90. N°60 MASTERSHIP	IH60	5903684217847	171. N°141 UNFORGETTABLE	IH141	5904474816998	249. Builder Gel WHITE 50ml	BG-W15	5904474816684
13. UV/LED Base Coat Rubber PINK	IH-RBP-PINK	5904474816530	91. N°61 FANTASY	IH61	5903684217892	172. N°142 RAINY LEAF	IH142	5904474816943	250. Builder Gel FRENCH PINK 15ml	BG-W150	5904474816677
14. UV/LED Base Coat Rubber COVER PINK	IH-RBC-COVPINK	5904474816578	92. N°62 DREAMER	IH62	5903684217908	173. N°143 SUNFLOWER	IH143	5905108772000	251. Builder Gel FRENCH PINK 50ml	BG-FR15	5905108772147
15. UV/LED Base Coat Rubber CLEAR	IH-RBC-CLEAR	5904474816585	93. N°63 SWAY	IH63	5903684217915	174. N°144 AUTUMN FLAME	IH144	5905108772017	252. Builder Gel MILKY WHITE 15ml	BG-FP50	5905108772154
16. UV/LED Base Coat Rubber MILKY WHITE	IH-RBC-MILWH	5905108772178	94. N°64 PERCEPTION	IH64	5903684217922	175. N°145 PUMPKIN LOVE	IH145	5905108772192	253. Builder Gel MILKY WHITE 50ml	BG-MW15	5905108772123
17. UV/LED Base Coat Builder in a Bottle COVER	IC-BBC-COVER	5904474816523	95. N°65 UNIVERSE	IH65	5903684217939	176. N°146 HAZELNUT DREAM	IH146	5905108772208		BG-MW50	5905108772130
18. UV/LED Base Coat Builder in a Bottle PINK	IC-BBC-PINK	5904474816561	96. N°66 EXPERIENCE	IH66	5903684217946	177. N°147 CORAL BLUSH	IH147	5905108772215	254. Inveray Nail Prep pH equalizing dehydrator	INP	5903684217182
19. UV/LED Base Coat Builder in a Bottle CLEAR	IC-BBC-CLEAR	5904474816493	97. N°67 IMPRESSION	IH67	5903684217953	178. N°148 MY TRUE LOVE	IH148	5905108772222	255. Pro Hand Cleaner 250 ml	PHC-025	5903684217021
20. UV/LED Base Coat Builder in a Bottle MILKY WHITE	IC-BBC-MILWH	5905108772161	98. N°68 ADVENTURE	IH68	5903684217960	179. N°149 RUBY FLAME	IH149	5905108772239	256. Dezyn DGU+ 250 ml	ID-DG-025	5903684217038
21. UV/LED Base Coat Natural Vibes SILK	IH-BNV-SK	5905108772741	99. N°69 QUEST	IH69	5903684217977	180. N°150 RETRO RED	IH150	5905108772246	257. Inveray Cleaner Prep & Wipe dehydrator 100 ml	IC-PWD-010	5903684217120
22. UV/LED Base Coat Natural Vibes LINEN	IH-BNV-LN	5905108772758	100. N°70 BLUE RIBBON	IH70	5903684217984	181. N°151 GOLDEN SUNSET	IH151	5905108772253	258. Inveray Cleaner Prep & Wipe dehydrator 500 ml	IC-PWD-050	5903684217236
23. UV/LED Base Coat Natural Vibes WOOL	IH-BNV-WL	5905108772765	101. N°71 CALM	IH71	5903684217991	182. N°152 BETTER BE MINE	IH152	5905108772260	259. Inveray Cleaner Prep & Wipe dehydrator 1000 ml	IC-PWD-100	5903684217243
24. UV/LED Base Coat Natural Vibes COTTON	IH-BNV-CN	5905108772772	102. N°72 HUSH	IH72	5904474816004	183. N°153 THE GLADES OF DREAMS	IH153	5905108772352	260. Inveray Gel-Off Gel Polish Remover 100 ml	IPR-NS-010	5903684217137
25. UV/LED Base Coat Natural Vibes MODAL	IH-BNV-ML	5905108772789	103. N°73 SPOTLIGHT	IH73	5904474816011	184. N°154 GREENLAND	IH154	5905108772369	261. Inveray Gel-Off Gel Polish Remover 500 ml	IPR-NS-050	5903684217212
26. UV/LED Base Coat Natural Vibes BYSSUS	IH-BNV-BS	5905108772796	104. N°74 PRESTIGE	IH74	5904474816028	185. N°155 DANCE WITH ME	IH155	5905108772376	262. Inveray Gel-Off Gel Polish Remover 1000 ml	IPR-NS-100	5903684217229
27. UV/LED Base Coat Natural Vibes SISAL	IH-BNV-SL	5905108772802	105. N°75 FAME	IH75	5904474816035	186. N°156 GOLDEN EYE	IH156	5905108772383			
28. UV/LED Base Coat Natural Vibes CASHMERE	IH-BNV-CE	5905108772819	106. N°76 AFFAIR	IH76	5904474816042	187. N°157 SUPERHERO	IH157	5905108772390	263. Inveray Professional Salon Lamp 54W	IH-PSL	5904474816899
29. UV/LED Base Coat Natural Vibes HESSIAN	IH-BNV-HN	5905108772826	107. N°77 AMITY	IH77	5904474816059	188. N°158 SECRET KISS	IH158	5905108772406	264. Inveray Nail Form 300pcs Luxury Collection	IA-NF-300-LC	5905108772024
30. UV/LED Base Coat Natural Vibes VIACRA	IH-BNV-VA	5905108772833	108. N°78 WARMTH	IH78	5904474816066	189. N°159 MADE IN HEAVEN	IH159	5905108772413	265. Inveray #6 Oblique Gel Brush Luxury Collection	IA-60B-BG	5905108772031
UV/LED Gel Nail Polish Luxury Collection						190. N°160 BENEATH THE WATERS	IH160	5905108772420	266. Inveray #6 Flat Gel Brush Luxury Collection	IA-6FL-BG	5905108772048
31. N°1 OPTIMISM	IH1	5903684217250	109. N°79 FANCY	IH79	5904474816073	191. N°161 AQUAMARINE SPARKLE	IH161	5905108772437	267. Inveray Nail Art Gel Brush Luxury Collection	IA-NAR-BG	5905108772062
32. N°2 EMPATHY	IH2	5903684217267	110. N°80 UNITY	IH80	5904474816080	192. N°162 SNOW WHITE	IH162	5905108772444	268. Inveray #6 Oval Gel Brush Luxury Collection	IA-6OV-BG	5905108772055
33. N°3 DAINITNESS	IH3	5903684217274	111. N°81 EXISTENCE	IH81	5904474816097	193. N°163 TRANSCIENCE	IH163	5905108772451	269. Inveray 5mm Liner Gel Brush Luxury Collection	IA-5MML-BG	5905108772079
34. N°4 ATTRACTION	IH4	5903684217281	112. N°82 WISDOM	IH82	5904474816103	194. N°164 NIGHT DRESS	IH164	5905108772468	270. Inveray 7mm Liner Gel Brush Luxury Collection	IA-7MML-BG	5905108772086
35. N°5 FRIENDSHIP	IH5	5903684217298	113. N°83 CRANBERRY PUNCH	IH83	5904474816110	195. N°165 CLOUDLESS SKY	IH165	5905108772512	271. Inveray Nail File 180/240 Halfmoon Grey	IA-NF-180-240-HG	5905108772093
36. N°6 CHARM	IH6	5903684217304	114. N°84 FLIRT	IH84	5904474816127	196. N°166 THE SUN	IH166	5905108772519	272. Inveray Nail File 100/180 Halfmoon Grey	IA-NF-100-180-HG	5905108772109
37. N°7 ENERGY	IH7	5903684217311	115. N°85 CREATIVITY	IH85	5904474816134	197. N°167 ORANGE JUICE	IH167	5905108772628	273. Inveray Buffer 100/100 White	IA-BW-100-100	5905108772116
38. N°8 FRESHNESS	IH8	5903684217328	116. N°86 INCEPTION	IH86	5904474816141	198. N°168 SPICY PEPPER	IH168	5905108772635	274. Inveray Ombre Gel Brush #6 Luxury Collection	IA-6OM-BG	5905108772499
39. N°9 FAITH	IH9	5903684217335	117. N°87 HOPE	IH87	5904474816158	199. N°169 WILD ROSE	IH169	5905108772642	275. N°189 Red Runway	IH 189	5906067400034
40. N°10 DAYDREAM	IH10	5903684217342	118. N°88 PROFIT	IH88	5904474816165	200. N°170 OLEANDER	IH170	5905108772659	276. N°190 Bordeaux	IH 190	5906067400041
41. N°11 DIVINE	IH11	5903684217359	119. N°89 AZURE FIZZ	IH89	5904474816172	201. N°171 GARDEN ROSE	IH171	5905108772666	277. N°191 Twilight Truffle	IH 191	5906067400058
42. N°12 INTELLECT	IH12	5903684217366	120. N°90 VISION	IH90	5904474816189	202. N°172 DARK FUCHSIA	IH172	5905108772673	278. N°192 Chocolate Pudding	IH 192	5906067400065
43. N°13 VIGOR	IH13	5903684217373	121. N°91 FLAME	IH91	5904474816196	203. N°173 SUMMER NIGHTS	IH173	5905108772680	279. N°193 Cream White	IH 193	5906067400072
44. N°14 SERENITY	IH14	5903684217380	122. N°92 HONESTY	IH92	5904474816202	204. N°174 AZURE COAST	IH174	5905108772697	280. N°194 Ballerina	IH 194	5906067400089
45. N°15 PROSPERITY	IH15	5903684217397	123. N°93 PRUDENCE	IH93	5904474816219	205. N°175 LAGOON	IH175	5905108772703	281. N°195 Vintage Pink	IH 195	5906067400096
46. N°16 TRUST	IH16	5903684217403	124. N°94 COMFORT	IH94	5904474816226	206. N°176 THE HAVEN	IH176	5905108772710	282. N°196 Majestic Violet	IH 196	5906067400102
47. N°17 SPIRITUALITY	IH17	5903684217410	125. N°95 KINDNESS	IH95	5904474816233	207. N°177 BERRY BLISS	IH177	5905108772717	283. N°197 Woodland	IH 197	5906067400119
48. N°18 MYSTERY	IH18	5903684217427	126. N°96 SOFT	IH96	5904474816240	208. N°178 GRAPE CRUSH	IH178	5905108772724	284. N°198 Lively Larch	IH 198	5906067400126
49. N°19 BLISS	IH19	5903684217434	127. N°97 AMBITION	IH97	5904474816257	209. N°179 PURPLE HAZE	IH179	5905108772731	285. N°199 Mystic Shadow	IH 199	5906067400157
50. IN°20 DELIGHT	IH20	5903684217441	128. N°98 EMPIRE	IH98	5904474816264	210. N°180 PLUM	IH180	5905108772738	286. N°200 Blue Bookmark	IH 200	5906067400140
51. N°21 FANTASY ISLAND	IH21	5903684217458	129. N°99 FLUSTER	IH99	5904474816271	211. N°181 FIG FIZZ	IH181	5905108772745	287. N°201 Dawn's Caress	IH-201	5906067400225
52. N°22 EXCITEMENT	IH22	5903684217465	130. N°100 ROYAL	IH100	5904474816288	212. N°182 ROSE SPRITZ	IH182	5905108772752	288. N°202 Silent Dawn	IH-202	5906067400232
53. N°23 ROMANCE	IH23	5903684217472	131. N°101 FEVER	IH101	5904474816295	213. N°183 MOCHA	IH183	5905108772759	289. N°203 Whisper Of Spring	IH-203	5906067400249
54. N°24 JOY	IH24	5903684217489	132. N°102 SEDUCTION	IH102	5904474816301	214. N°184 ICE COFFEE	IH184	5905108772766	290. N°204 Dreamweaver	IH-204	5906067400256
55. N°25 PASSION	IH25	5903684217496	133. N°103 WISH	IH103	5904474816318	215. N°185 LATTE MACCHIATO	IH185	5905108772773	291. N°205 Desert Breath	IH-205	5906067400263
56. N°26 FINESSE	IH26	5903684217502	134. N°104 TEMPERAMENT	IH104	5904474816325	216. N°186 GREEN TEA	IH186	5905108772780	292. N°206 Soulfire Blush	IH-206	5906067400270
57. N°27 IMPULSE	IH27	5903684217519	135. N°105 RASPBERRY ROULADE	IH105	5904474816332	217. N°187 SAIL AWAY	IH187	5905108772787	293. N°207 Misty Lilac Dream	IH-207	5906067400287
58. N°28 ECSTASY	IH28	5903684217526	136. N°106 PERSONALITY	IH106	5904474816349	218. N°188 MAROON MAGIC	IH188	5905108772794	294. N°208 Lunar Essence	IH-208	5906067400294
59. N°29 FASCINATION	IH29	5903684217533	137. N°107 SINCERITY	IH107	5904474816356			295. N°209 Glow Of Angelic Thought	IH-209	5906067400300	
60. N°30 GRACE	IH30	5903684217540	138. N°108 MONARCHY	IH108	5904474816363			296. N°210 Soul Affection	IH-210	5906067400317	
61. N°31 AFFECTION	IH31	5903684217557	139. N°109 MELANCHOLY	IH109	5904474816370			297. N°211 Meadow Breeze	IH-211	5906067400324	
62. N°32 LIBERTY	IH32	5903684217564	140. N°110 HARMONY	IH110	5904474816387			298. N°212 Serenade Of Being	IH-212	5906067400331	
63. N°33 INTIMACY	IH33	5903684217571	141. N°111 PEACE	IH111	5904474816394			299. N°213 Saharan Glow	IH-213	5906067400409	
64. N°34 LOVE	IH34	5903684217588	142. N°112 INVENTION	IH112	5904474816400			300. N°214 Radiant Reverie	IH-214	5906067400416	
65. N°35 DESIRE	IH35	5903684217595	143. N°113 GLORY	IH113	5904474816417			301. N°215 Champagne Fiesta	IH-215	5906067400423	
66. N°36 INDEPENDENCE	IH36	5903684217601	144. N°114 CELEBRITY	IH114	5904474816424			302. N°216 Casino Queen	IH-216	5906067400430	
67. N°37 INNOCENCE	IH37	5903684217618	145. N°115 DAZZLING	IH115	5904474816431			303. N°217 Ruby Sunset	IH-217	5906067400447	
68. N°38 DELICACY	IH38	5903684217625	146. N°116 DELIGHTFUL	IH116	5904474816448			304. N°218 Vegas Pink Flash	IH-218	5906067400454	
69. N°39 ELEGANCE	IH39	5903684217632	147. N°117 TWINKLE	IH117	5904474816455			305. N°219 Saharan Sunset Gold	IH-219	5906067400461	
70. N°40 SUBTLE	IH										

	NAME	SKU	EAN code
1	UV/LED Gel Nail Polish N°225 NORTH STAR 10ml	IH-225	5906067400591
2	UV/LED Gel Nail Polish N°226 ICY GLOW 10ml	IH-226	5906067400607
3	UV/LED Gel Nail Polish N°227 POLAR MIST 10ml	IH-227	5906067400614
4	UV/LED Gel Nail Polish N°228 AURORA WHISPER 10ml	IH-228	5906067400621
5	UV/LED Gel Nail Polish N°229 MIDNIGHT FROST 10ml	IH-229	5906067400638
6	UV/LED Gel Nail Polish N°230 POLAR TWILIGHT 10ml	IH-230	5906067400645
7	UV/LED Gel Nail Polish N°231 NORTHERN SKYLINE 10ml	IH-231	5906067400652
8	UV/LED Gel Nail Polish N°232 FROZEN NIGHTFALL 10ml	IH-232	5906067400669
9	UV/LED Gel Nail Polish N°233 AURORA CRIMSON 10ml	IH-233	5906067400676
10	UV/LED Gel Nail Polish N°234 NORTHERN LIGHTS 10ml	IH-234	5906067400683
11	UV/LED Gel Nail Polish N°235 SNOW QUEEN 10ml	IH-235	5906067400690
12	UV/LED Gel Nail Polish N°236 GLACIER KISS 10ml	IH-236	5906067400706
13	UV/LED Gel Nail Polish N°237 SOFT REVERIE 10ml	IH-237	5906067400720
14	UV/LED Gel Nail Polish N°238 CRIMSON PARADOX 10ml	IH-238	5906067400737
15	UV/LED Gel Nail Polish N°239 BLUSH MIRAGE 10ml	IH-239	5906067400744
16	UV/LED Gel Nail Polish N°240 GOLDEN DUSK 10ml	IH-240	5906067400751
17	UV/LED Gel Nail Polish N°241 MIRAGE 10ml	IH-241	5906067400768
18	UV/LED Gel Nail Polish N°242 SUNNY TRANQUILITY 10ml	IH-242	5906067400775
19	UV/LED Gel Nail Polish N°243 AZURE ILLUSION 10ml	IH-243	5906067400782
20	UV/LED Gel Nail Polish N°244 MINT WHISPER 10ml	IH-244	5906067400799
21	UV/LED Gel Nail Polish N°245 LIME EPIPHANY 10ml	IH-245	5906067400805
22	UV/LED Gel Nail Polish N°246 LAVENDER DREAM 10ml	IH-246	5906067400812
23	UV/LED Gel Nail Polish N°247 SUNNY SERENITY 10ml	IH-247	5906067400829
24	UV/LED Gel Nail Polish N°248 FROSTED TWILIGHT 10ml	IH-248	5906067400836
25	UV/LED Gel Nail Polish N°249 SEA MUSE 10ml	IH-249	5906067400942
26	UV/LED Gel Nail Polish N°250 HERA'S LILY 10ml	IH-250	5906067400959
27	UV/LED Gel Nail Polish N°251 ZEPHYR'S BREATH 10ml	IH-251	5906067400966
28	UV/LED Gel Nail Polish N°252 NYMPH'S TOUCH 10ml	IH-252	5906067400973
29	UV/LED Gel Nail Polish N°253 PSYCHE'S LOVE 10ml	IH-253	5906067400980
30	UV/LED Gel Nail Polish N°254 GAEA'S EARTH 10ml	IH-254	5906067400997
31	UV/LED Gel Nail Polish N°255 EOS' DAWN 10ml	IH-255	5906067401000
32	UV/LED Gel Nail Polish N°256 DEMETER'S FRUIT 10ml	IH-256	5906067401017
33	UV/LED Gel Nail Polish N°257 VENUS' BLUSH 10ml	IH-257	5906067401024
34	UV/LED Gel Nail Polish N°258 SELENE'S WHISPER 10ml	IH-258	5906067401031
35	UV/LED Gel Nail Polish N°259 SHIMMER OF IRIS 10ml	IH-259	5906067401048
36	UV/LED Gel Nail Polish N°260 STARS OF URANUS 10ml	IH-260	5906067401055
37	UV/LED Gel Nail Polish N°261 ARTEMIS' EMERALD 10ml	IH-261	5906067401062
38	UV/LED Gel Nail Polish N°262 APHRODITE'S SPARKS 10ml	IH-262	5906067401079
39	UV/LED Gel Nail Polish N°263 HEPHAESTUS' DUST 10ml	IH-263	5906067401086
40	UV/LED Gel Nail Polish N°264 FORTUNA'S GOLD 10ml	IH-264	5906067401093
41	UV/LED Gel Nail Polish N°265 PERSEPHONE'S DUST 10ml	IH-265	5906067401109
42	UV/LED Gel Nail Polish N°266 MORPHEUS' DREAM 10ml	IH-266	5906067401116
43	UV/LED Gel Nail Polish N°267 COSMIC WHISPER 10ml	IH-267	5906067401123
44	UV/LED Gel Nail Polish N°268 MYSTIC LAGOON 10ml	IH-268	5906067401130
45	UV/LED Gel Nail Polish N°269 SOLAR BEAM 10ml	IH-269	5906067401147
46	UV/LED Gel Nail Polish N°270 GOLDEN DUNE 10ml	IH-270	5906067401154
47	UV/LED Gel Nail Polish N°271 AMBER MIRAGE 10ml	IH-271	5906067401161
48	UV/LED Gel Nail Polish N°272 MOLTEN BRONZE 10ml	IH-272	5906067401178
49	UV/LED Gel Nail Polish N°273 FIRE EMBER 10ml	IH-273	5906067401185
50	UV/LED Gel Nail Polish N°274 CORAL FLAME 10ml	IH-274	5906067401192
51	UV/LED Gel Nail Polish N°275 CHAMPAGNE DUST 10ml	IH-275	5906067401208
52	UV/LED Gel Nail Polish N°276 MOON ARMOR 10ml	IH-276	5906067401215
53	UV/LED Gel Nail Polish N°277 TITAN VEIL 10ml	IH-277	5906067401222
54	UV/LED Gel Nail Polish N°278 GOLDEN ECLIPSE 10ml	IH-278	5906067401239

